



LOSBERGER DE BOER

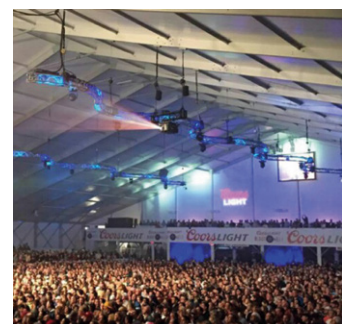


maxiflex Basic P10


Setting trends in modular expanse

The Losberger De Boer maxiflex P10 trade fair and event hall: one of the largest column free temporary structures in the world.

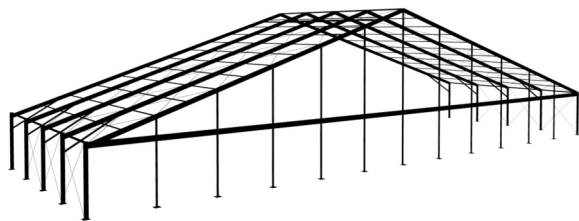
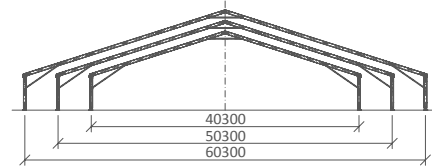
Over the last quarter of a century, modular temporary structures have traditionally been designed with maximum widths of up to 50 meters restricted in eave height. Thanks to the new Losberger De Boer P10, self-supporting structure, 60 m clear span widths with optimal ceiling heights, open up a multitude of opportunities for the events and exhibition industry. The P10 boasts the full advantages and features of the Losberger De Boer P1 and P3N systems, but with the added benefit of building structures of up to 60 meters wide in any length, with lateral heights of up to 6.80 meters. What's more the 50 m wide P10 can reach impressive heights of up to 8 meters! These notable expanses are only possible with the new extremely robust profile cross-section, the structures main components measure a solid 420 x 120 mm. Trade fair halls with large volume requirements can now be effortlessly achieved, huge warehouses for trade fair goods with essential height requirements are made simple. Even temporary mobile event solutions the size of football pitches are accomplished with ease. The maxiflex P10 offers an innovative and flexible large space solution, setting new trends for the delivery and execution of trade fairs and large scale events – as always, in premium quality.



System measurements

Type	Profile	Frame ID#	Truss Profile	Width	Leg	Truss-distance	Rafter Selections	
							Standard	Optional
 maxiflex	P10	8	16 1/2" x 4 3/4" 420 mm x 120 mm	40 m	400/540/680/800 cm	5 m/16'	10.0 m + 10.0 m	-
				50 m	400/540/680/800		10.0 m + 10.0 m + 5.0 m	-
				60 m	400/540/680		10.0 m + 10.0 m + 10.0 m	-

Roof pitch for all ridged roof structures is 18 degrees.
 Snow load: none (possible upon request). Longest component: 11.5 m.
 First struts are necessary for every type. Except for 40.8/400, 50.8/400 and 60.8/400 additional corner/eave struts are fitted. Subject to technical changes.



Example: Losberger De Boer maxiflex 60.8/540 Base P10

Textile covers

Textile covers made of polyester fabric, coated with PVC on both sides. Curtains with PVC-gliders for easy fitting in curtain groove. Side and gable curtains can be produced with zips or lace and grommet closure. Through its compatibility with maxiflex P1 components, system wall elements are available in glass or PVC for every P10 type. At the same time both vertical and horizontal wall elements can be used.



Frame

Thanks to its modular design the P10 can be combined and extended in a multitude of ways. Benefit from the products simple logistics, quick assembly and dismantle, plus ease of storage and maintenance. Thanks to the great interchangeability of marquee components within the construction kit, plus the compatibility with the P1-System, extensions and different widths can be created without expensive or complex investments. Possible to assemble with and without Losberger De Boer cassette flooring, only few specific expansion cassettes are necessary. Option for mezzanine floors for complete upper levels or galleries with the maxiflex Emporium products.

Technical specification

r/Y-struts: premium, extruded 4-Nut aluminum hollow profile
Steel components: hot-dip galvanized in accordance with DIN EN ISO 1461
Ground anchoring: Bar armature
Add-on options: Yes

Design load / Technical information

Min. erection length: 30.00 m **Max. erection length:** any in binder spacing

Losberger De Boer
 285 Bucheimer Rd Suite A
 Frederick, MD 21701
 Phone: 1-301-682-8000
 Fax: 1-301-682-8005
 E-Mail: LosbergerUS@losbergerdeboer.com
 www.losbergerus.com